

STORMWATER FACT SHEET: CONSTRUCTION SITE STORMWATER BMP TIPS



Quick facts on...

Simple Things to Keep Yourself Out of Trouble!



TRACKING SEDIMENT OFF SITE

IDEM Requirements:

- A stable construction site access shall be provided at all points of construction traffic ingress and egress to the project site (327 IAC 15-5-7(b)(3)).
- Public or private roadways shall be kept cleared of accumulated sediment that is a result of run-off or tracking (327 IAC 15-5-7(b)(4)).



Source: Indiana Storm Water Quality Manual

COMPLIANCE TRIPLE-CHECK:

Verify that the entrance is constructed per the SWPPP (length, width, flared end towards the road). Yes

Verify that drainage ditches are not blocked by the construction entrance. Yes

Verify that public roads are free of sediment from run-off or tracking. Yes

INLET PROTECTION

IDEM Requirements:

- Storm water run-off leaving a project site must be discharged in a manner that is consistent with applicable state or federal law (327 IAC 15-5-7(b)(5)).
- Appropriate measures shall be planned and installed as part of an erosion and sediment control system. (327 IAC 15-5-7(b)(11)).



COMPLIANCE TRIPLE-CHECK:

Verify that inlet protection is installed properly. Yes

Inspect all inlet protection weekly and within 24 hours of a 0.5" rain event. Yes

Verify that stormwater is not bypassing or undercutting the inlet protection.. Yes

CONCRETE WASHOUT

IDEM Requirements:

- Appropriate measures shall be implemented to eliminate wastes or unused building materials, including concrete truck washout (327 IAC 15-5-7(b)(2)).
- Identification of areas where concrete truck washout is permissible must be clearly posted at appropriate areas of the site (327 IAC 15-5-7(b)(2)).



Source: INDOT Storm Water Management Field Guide

COMPLIANCE TRIPLE-CHECK:

Verify that the concrete washout location is near a road or entrance for ease of truck access to the washout facility. Yes

When using plastic liner, verify that one continuous sheet of plastic liner is used. Yes

Verify that a sign is next to the concrete washout location and that delivery drivers are aware of the location. Yes

HOUSEKEEPING ON YOUR SITE

IDEM Requirements:

- Appropriate measures shall be implemented to minimize or eliminate wastes or unused building materials, including garbage, debris, cleaning wastes, wastewater, concrete truck washout, and other substances from being carried from a project site by run-off or wind. Wastes and unused building materials shall be managed and disposed of in accordance with all applicable statutes and regulations (327 IAC 15-5-7(b)(2)).



COMPLIANCE TRIPLE-CHECK:

Verify that procedures are in place with spill response materials kept on-site in case of a spill. Yes

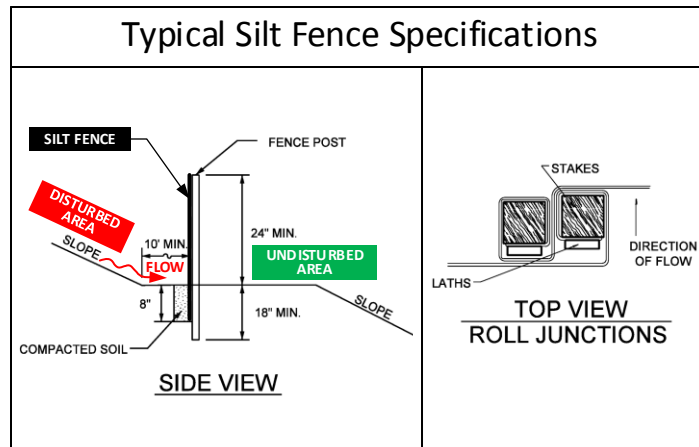
Verify that temporary toilet facilities are staked in place to prevent them from tipping over and spilling their contents. Yes

Verify that temporary toilet facilities are located away from drains and sensitive environmental areas. Yes

PERIMETER CONTROL

IDEM Requirements:

- Sediment-laden water which otherwise would flow from the project site shall be treated by erosion and sediment control measures appropriate to minimize sedimentation (327 IAC 15-5-7(b)(1)).
- Storm water run-off leaving a project site must be discharged in a manner that is consistent with applicable state or federal law (327 IAC 15-5-7(b)(5)).



COMPLIANCE TRIPLE-CHECK:

- Verify that perimeter controls have been properly installed **BEFORE** land disturbance starts. Yes
- Verify that **ALL** stormwater point source outfalls and/or discharge points are adequately stabilized. Yes
- When using silt fence, verify that the bottom of the silt fence is trenched in and all joints are properly wrapped. Yes

ON-SITE FUEL MANAGEMENT

IDEM Requirements:

- A description of potential pollutant sources associated with the construction activities, that may reasonably be expected to add a significant amount of pollutants to storm water discharges (327 IAC 15-5-6.5(a)(7)(G)).
- Material handling and storage associated with construction activity shall meet the spill prevention and spill response requirements in 327 IAC 2-6.1 (327 IAC 15-5-6.5(a)(7)(H)).



COMPLIANCE TRIPLE-CHECK:

- Verify that fuel containers are located away from inlets and other sensitive areas (wetlands and waterbodies). Yes
- Verify that fueling operations are staged in a stabilized area. Yes
- Verify that fueling hoses are contained and not able to leak onto the ground. Yes

DUST CONTROL

INDOT Storm Water Management Field Guide (page 68):

"Dust control, especially during dry hot conditions, helps reduce wind erosion. Methods can include watering, resin/polymer application (in accordance with local, state, and federal regulations), mulching, street sweeping, and temporary vegetative covers. A pro-active approach should be used for effective dust control."



COMPLIANCE TRIPLE-CHECK:

- Verify that land disturbance to be left inactive for 15 days or more is stabilized (seeded or mulched). Yes
- Verify that procedures are in place and equipment is available to irrigate areas of land disturbance for dust control. Yes
- Verify that haul roads are located away from residential, commercial and public areas as much as possible. Yes

SWPPP MANAGEMENT

IDEM Requirements:

- A SWPPP must include a construction sequence describing the relationship between implementation of storm water quality measures and stages of construction activities (327 IAC 15-5-6.5(a)(7)(E)).
- The plans must include the delineation of all proposed land disturbing activities, including off-site activities that will provide services to the project site (327 IAC 15-5-6.5(a)(5)(A)).



COMPLIANCE TRIPLE-CHECK:

- Verify that the Construction Sequence specified in the SWPPP is being followed. Yes
- Verify that the actual land disturbance limits of the project site are within the boundaries delineated in the SWPPP. Yes
- Verify that any SWPPP changes are being recorded/documentated are available for review. Yes

For detailed information on what is needed to achieve and maintain compliance with Rule 5 regulations, refer to the specifications and practices contained with the approved SWPPP for your particular construction site.

For technical reference information on construction site BMPs in general, refer to the following documents for additional information:

- INDOT Storm Water Management Field Guide – 2015 (https://www.in.gov/indot/files/StormWater_FieldGuide_2015.pdf)
- Indiana Storm Water Quality Manual (www.in.gov/idem/stormwater/2363.htm)

The above references were used in the preparation of this Fact Sheet.

This Fact sheet provided by the Tippecanoe County Partnership for Water Quality and prepared by Christopher B. Burke Engineering, LLC



February 2018