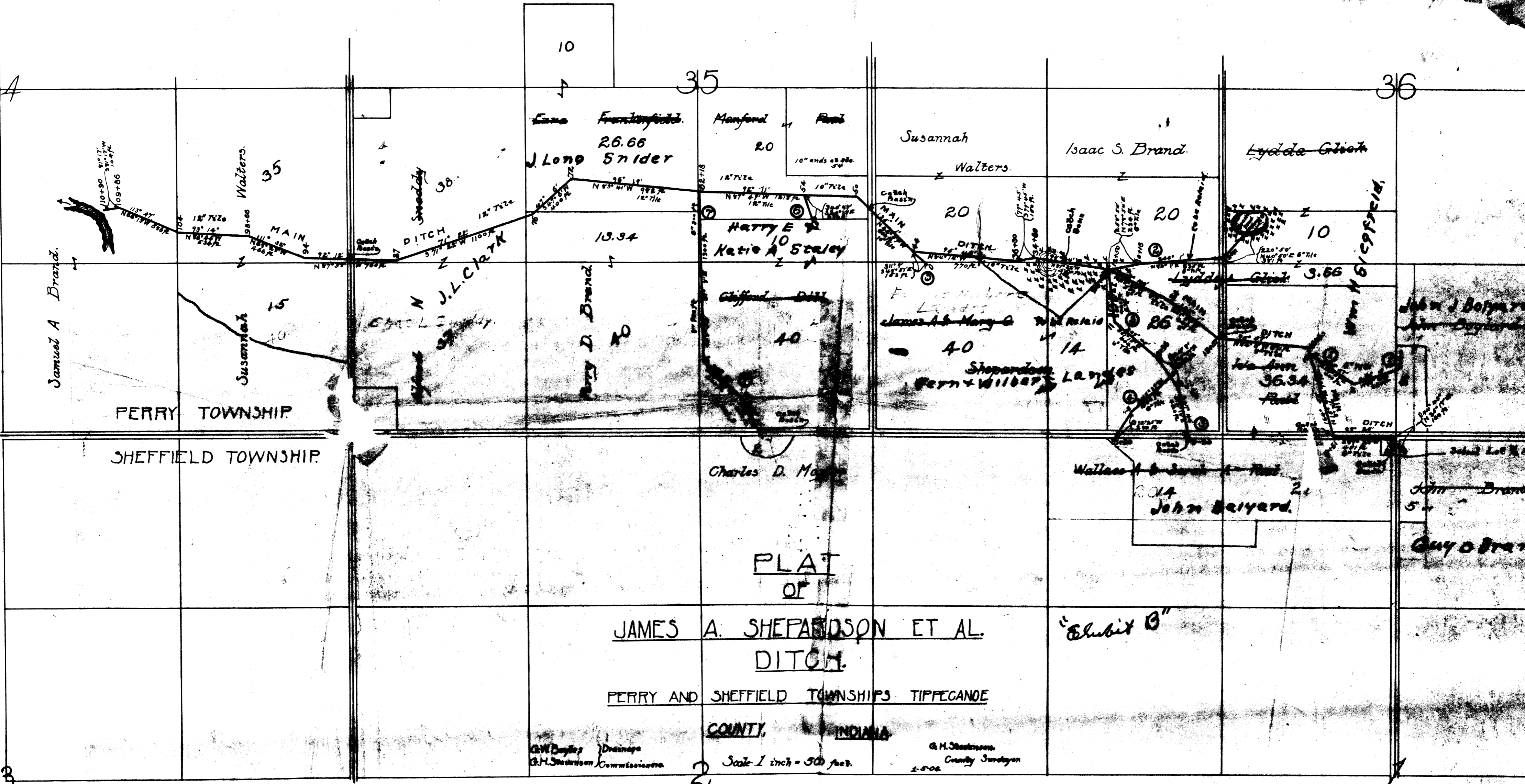


34
TOWNSHIP 23 NORTH
TOWNSHIP 22 NORTH
63



JAMES A. SHEPARDSON ET AL.
DITCH.

PERRY AND SHEFFIELD TOWNSHIPS TIPPECANOE

COUNTY, INDIANA

G.W. Boyard
G.H. Sturgeson
Drainage
Commissioners

Scale 1 inch = 500 feet.

G.H. Sturgeson
County Surveyor
1-1-00

RANGE 3 WEST