

PRAIRIE TOWNSHIP

R 4 W

PLAT OF  
**ANDREW P. BROWN DRAIN**  
 EXHIBIT "C"  
 SUPERIOR COURT CASE NO 2074  
 TIPPECANOE TOWNSHIP, TIPPECANOE COUNTY  
 PRAIRIE TOWNSHIP, WHITE COUNTY  
 SCALE 1 INCH = 660 FEET =  $\frac{1}{5}$  MILE  
 SURVEYOR'S OFFICE - LAFAYETTE, IND., 1950

LEGEND

- OPEN DITCH
- NEW FILE
- OLD FILE
- OO LINE
- TWP LINE
- ROADS
- DRAINAGE AREA
- OUTLINE
- SUB-DIVISIONS



T 25 N

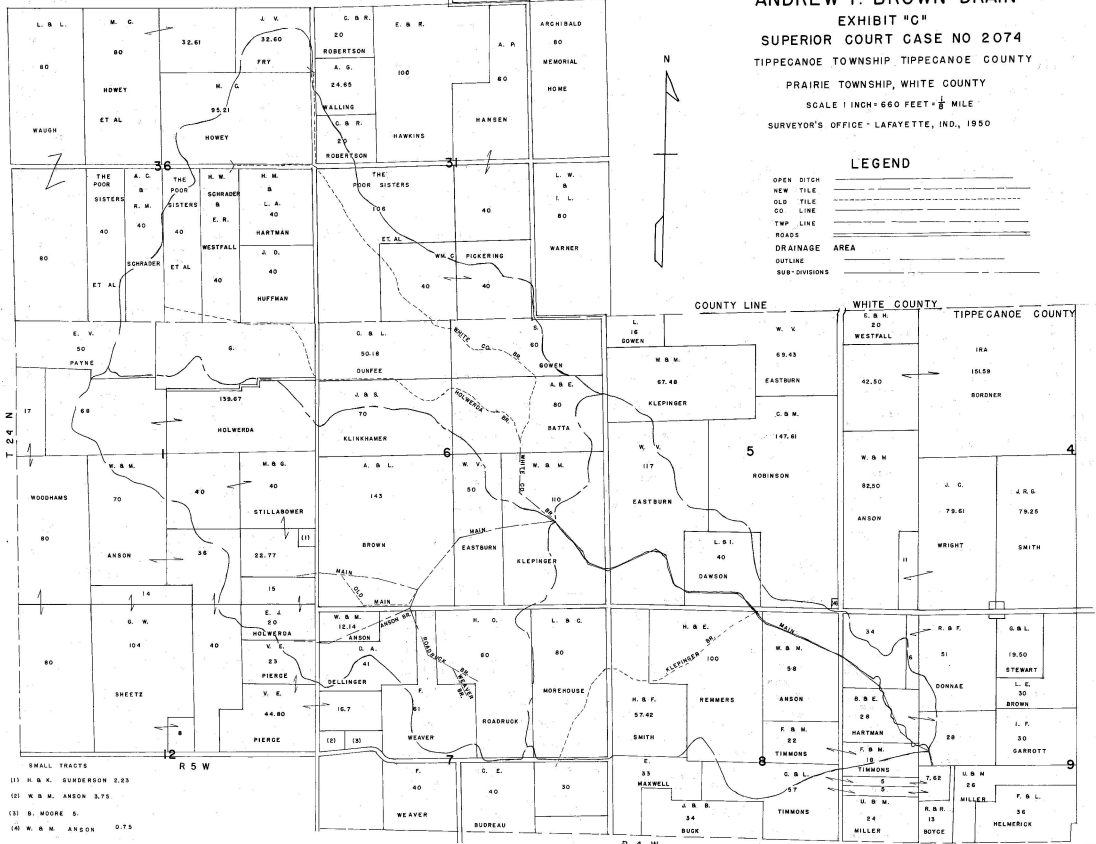
T 24 N

T 23 N

T 22 N

T 21 N

T 20 N



- SMALL TRACTS
- 113 H. & K. GUNDERSON 2.23
  - 121 W. & M. ANSON 3.75
  - 131 B. MOORE 5.
  - 140 W. & M. ANSON 0.75

TIPPECANOE TOWNSHIP

R 4 W

*Brown*