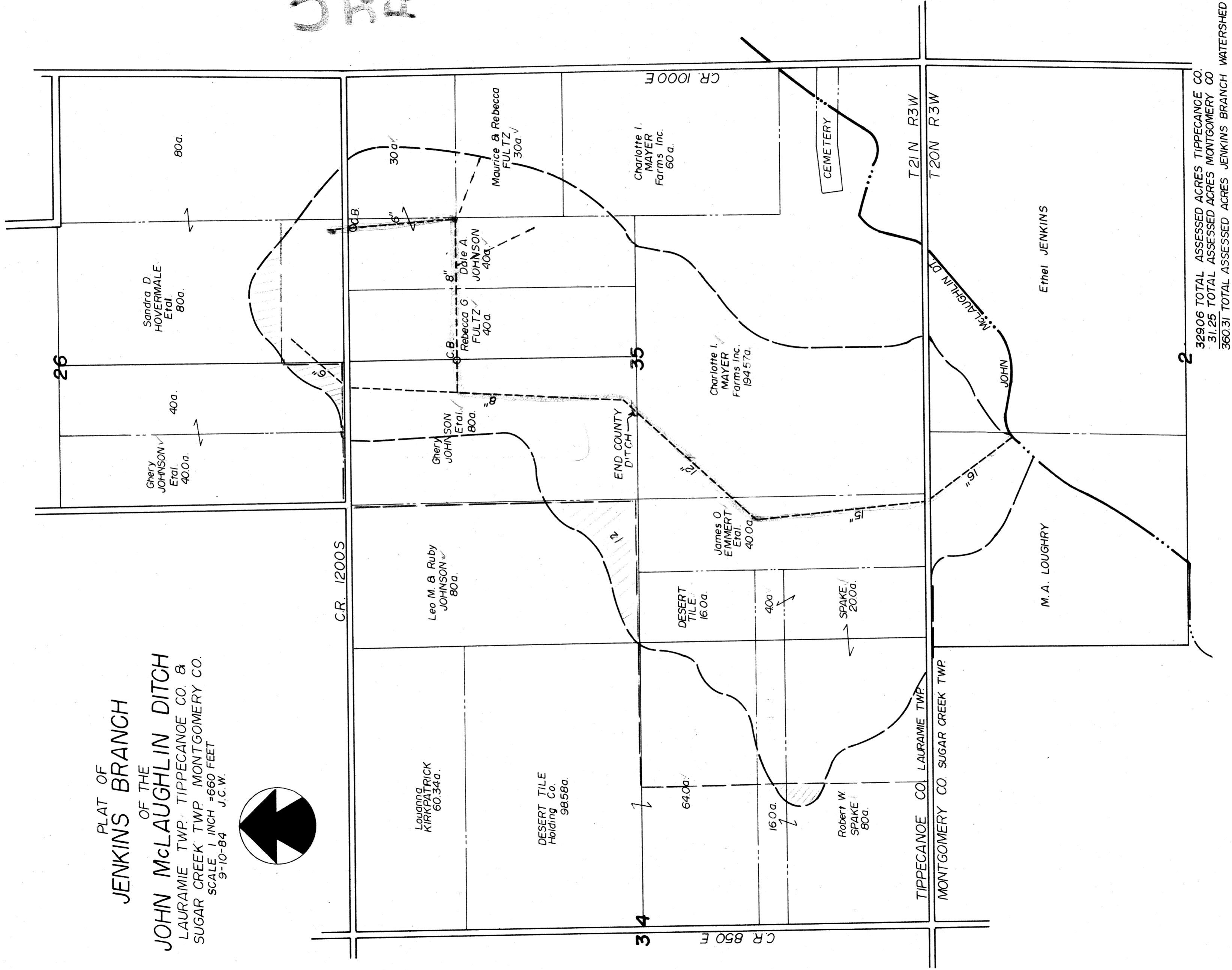
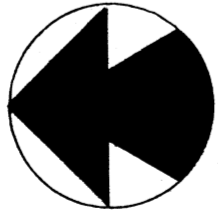


*Under
Jenkins
Fund*

PLAT OF
JENKINS BRANCH
OF THE
JOHN McLAUGHLIN DITCH
LAURAMIE TWP. TIPPECANOE CO. &
SUGAR CREEK TWP. MONTGOMERY CO.
SCALE 1 INCH = 660 FEET
9-10-84 J.C.W.



32906 TOTAL ASSESSED ACRES TIPPECANOE CO.
31.25 TOTAL ASSESSED ACRES MONTGOMERY CO.
360.31 TOTAL ASSESSED ACRES JENKINS BRANCH WATERSHED