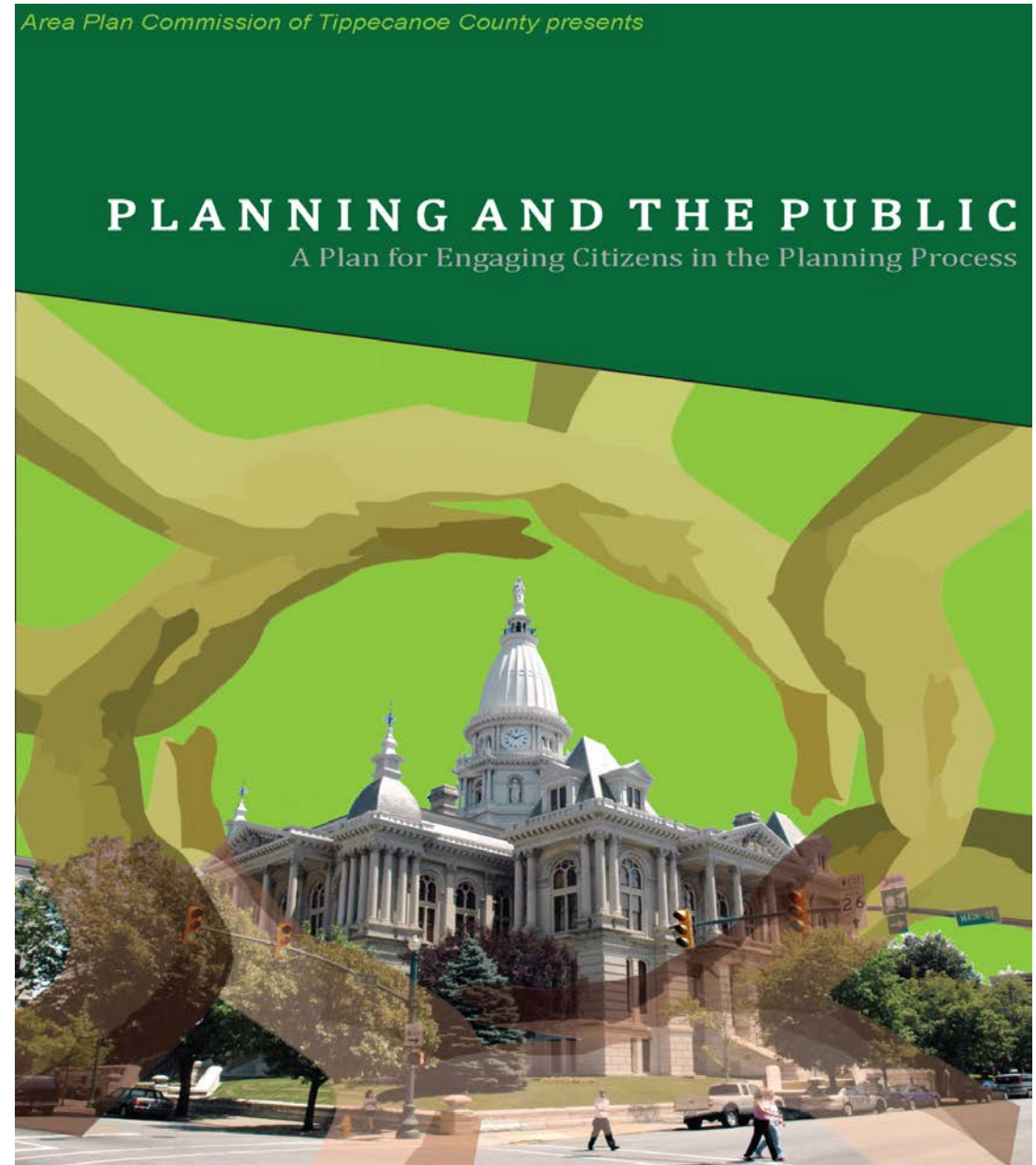


Public Participation Plan

Tim Stroshine, APC

Public Participation Plan

- Previous plan adopted in 2007
- Adoption anticipated in July/Aug
- Ties in with other plans

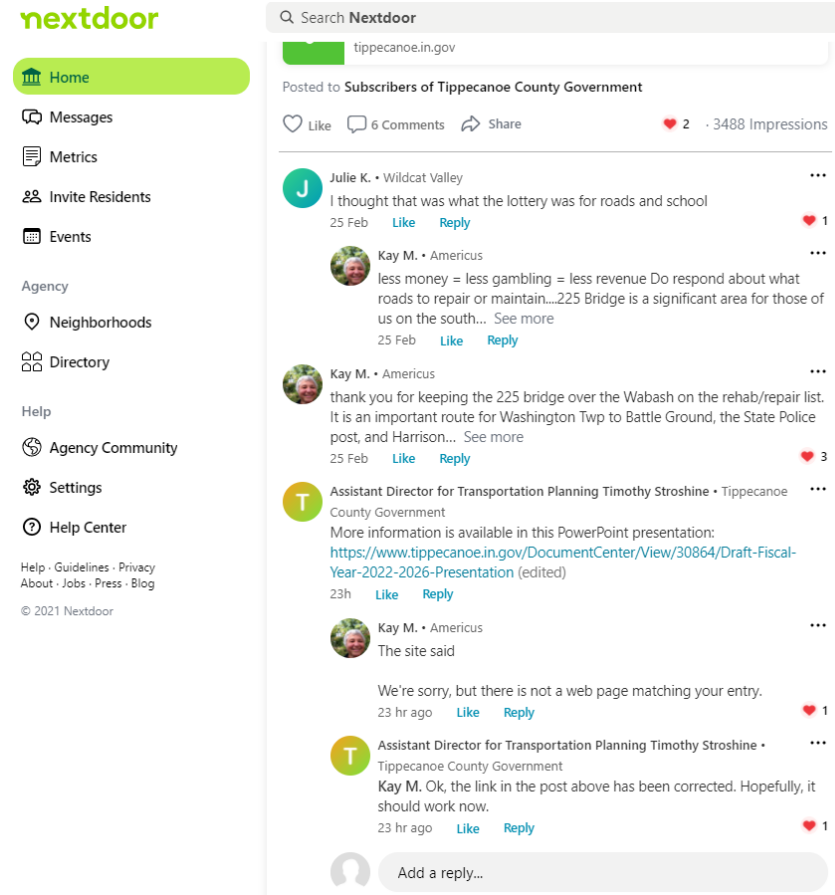


Public Participation Plan

- Social Media Outreach
- Limited English Proficiency Outreach
- Outreach to Other Underserved Populations

Social Media

- Social Media Accounts
 - Facebook
 - Nextdoor
 - Twitter (Coming Soon)
- Used to distribute announcements, surveys, and meeting notices
- Reply to citizen comments



Limited English Proficiency

Table 24: Language Spoken at Home for Population Five Years & Over, Carroll County

Language	Number of Persons	%
Spanish	651	3.4
Arabic	109	0.6
German	37	0.2
Japanese	22	0.1
French	20	0.1
Italian	17	0.1
Other Indic	13	0.1
Other German	11	0.1
Other Slavic	8	0.0
Russian	2	0.0

2011-2015 American Survey, 5-Year Estimate, Table B16001

Language Assistance Plan (LAP)

Located in the Draft Title VI Policy and Limited English Proficiency Language Assistance Plan

- Identifying LEP Individuals,
- Language Assistance and Outreach,
- Staff Training,
- Monitoring, Evaluating, and Updating,
- Submission of Questions, Comments or Requests

Other Underserved Populations

Title VI Plan

DRAFT

Table 8, Minority Populations by Census Block Group

Block Group	Total Pop.	White	Black/ African	% Black /African	Indian and Alaska Native	% Indian & Alaska Native	Asian	% Asian	Native Hawaiian and Other Pacific Islander	% Hawaiian & Other Pacific Islander	Some Other Race	% Other Race	Two or more	% Two or More
1.01	959	925	27	2.8	0	0.0	0	0.0	0	0.0	7	0.7	0	0.0
1.02	1,850	1,383	401	21.7	18	1.0	0	0.0	0	0.0	6	0.3	42	2.3
2.01	896	779	117	13.1	0	0.0	0	0.0	0	0.0	0	0.0	0	0.0
2.02	925	830	63	6.7	0	0.0	0	0.0	0	0.0	0	0.0	33	3.6
3.01	1,629	1,368	218	13.4	0	0.0	0	0.0	0	0.0	13	0.8	30	1.8
3.02	1,491	1,430	21	1.4	0	0.0	24	1.6	0	0.0	0	0.0	16	1.1
4.01	1,796	1,247	425	23.7	0	0.0	97	5.4	0	0.0	0	0.0	27	1.5
4.02	1,227	563	436	35.5	0	0.0	128	10.4	0	0.0	0	0.0	0	0.0
4.03	1,067	861	176	16.5	0	0.0	30	2.8	0	0.0	0	0.0	0	0.0
4.04	569	516	0	0.0	0	0.0	21	3.7	0	0.0	17	3.0	15	2.6
7.01	1,030	931	89	8.6	0	0.0	0	0.0	0	0.0	10	1.0	0	0.0
7.02	806	561	104	12.9	0	0.0	25	3.1	0	0.0	97	12.0	19	2.4
7.03	1,008	694	275	27.3	0	0.0	0	0.0	0	0.0	0	0.0	39	3.9
7.04	561	548	8	1.4	0	0.0	0	0.0	0	0.0	0	0.0	5	0.9
8.01	1,320	1,220	34	2.6	7	0.5	0	0.0	0	0.0	11	0.8	48	3.6
8.02	560	517	31	5.5	8	1.4	0	0.0	0	0.0	0	0.0	4	0.7
10.01	1,430	1,313	7	0.5	0	0.0	23	1.6	0	0.0	41	2.9	46	3.2
11.01	1,072	1,022	25	2.3	0	0.0	17	1.6	0	0.0	0	0.0	8	0.8
11.02	587	546	0	0.0	0	0.0	0	0.0	0	0.0	6	1.0	35	6.0
11.03	1,261	1,255	5	0.4	0	0.0	0	0.0	0	0.0	0	0.0	1	0.1
12.01	1,467	1,329	18	1.2	0	0.0	0	0.0	0	0.0	47	3.2	73	5.0
12.02	839	706	104	12.4	0	0.0	0	0.0	0	0.0	11	1.3	18	2.2
12.03	821	691	106	12.9	0	0.0	13	1.6	0	0.0	0	0.0	11	1.3
13.01	2,455	2,196	62	2.5	3	0.1	0	0.0	0	0.0	110	4.5	84	3.4
13.02	1,331	1,224	59	4.4	18	1.4	19	1.4	0	0.0	11	0.8	0	0.0
13.03	747	718	11	1.5	8	1.1	10	1.3	0	0.0	0	0.0	0	0.0
14.01	3,126	2,569	264	8.4	0	0.0	10	0.3	0	0.0	139	4.5	44	1.4
14.02	792	613	45	5.7	0	0.0	0	0.0	0	0.0	88	11.1	46	5.8
15.11	2,322	1,534	733	31.6	0	0.0	40	1.7	0	0.0	0	0.0	15	0.7
15.12	2,212	2,150	0	0.0	0	0.0	12	0.5	0	0.0	44	2.0	6	0.3
15.21	2,478	2,346	0	0.0	0	0.0	50	2.0	0	0.0	0	0.0	82	3.3
15.22	2,502	2,168	221	8.8	0	0.0	0	0.0	0	0.0	0	0.0	113	4.5
15.23	1,418	1,291	118	8.3	0	0.0	9	0.6	0	0.0	0	0.0	0	0.0
16.01	1,998	1,885	74	3.7	0	0.0	0	0.0	0	0.0	39	1.95	0	0.0
16.02	2,189	2,001	44	2.0	0	0.0	11	0.5	0	0.0	0	0.0	133	6.1
16.03	4,027	3,947	0	0.0	0	0.0	0	0.0	0	0.0	0	0.0	80	2.0

2011-2015 American Survey, 5-Year Estimate, Table B02001

DRAFT

Table 9, Hispanic Populations by Census Block Group

Block Group	Total Population	Hispanic	% Hispanic
1.01	959	159	16.6
1.02	1,850	111	6.0
2.01	896	49	5.5
2.02	925	140	15.1
3.01	1,629	275	16.9
3.02	1,491	13	0.9
4.01	1,796	0	0.0
4.02	1,227	121	9.9
4.03	1,067	140	13.1
4.04	569	22	3.9
7.01	1,030	96	9.3
7.02	806	319	39.6
7.03	1,008	2	0.2
7.04	561	96	17.1
8.01	1,320	115	8.7
8.02	560	109	19.5
10.01	1,430	60	4.2
11.01	1,072	108	10.1
11.02	587	48	8.2
11.03	1,261	13	1.0
12.01	1,467	548	37.0
12.02	839	19	2.3
12.03	821	15	1.8
13.01	2,455	195	7.9
13.02	1,331	161	12.1
13.03	747	51	6.8
14.01	3,126	634	20.3
14.02	792	244	30.8
15.11	2,322	192	8.3
15.12	2,212	283	12.8
15.21	2,478	112	4.5
15.22	2,502	78	3.1
15.23	1,418	99	7.0
16.01	1,998	39	2.0
16.02	2,189	0	0.0
16.03	4,027	1019	25.3

Note: Denotes Census Block Containing a Higher than Average Minority Population

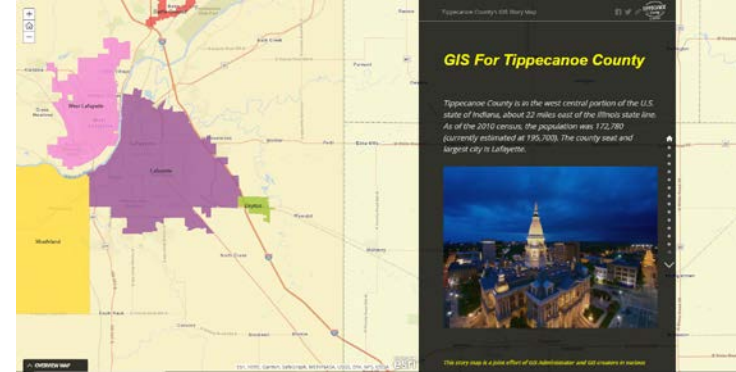
2011-2015 American Survey, 5-Year Estimate, Table B03002

Coordinated Human Services Transportation Plan

Elderly,
Disabled,
Low Income,
Vehicles Available,
Occupied Housing,
Veterans, and
Employment

Example Public Involvement Efforts

- Virtual Public Meetings
 - All public comments compiled and documented
- GIS Day
 - GIS Story Map
 - Web tutorial of County's GIS tools
- Leadership Lafayette Event
- Latinx Community Outreach
- Community Center Outreach Efforts (pre-COVID19)



How to Comment on the Plan

- We want your comments!
- <https://www.tippecanoe.in.gov/DocumentCenter/View/35282/Public-Participation-Plan---2021-Update>
- Send comments to apc@tippecanoe.in.gov

