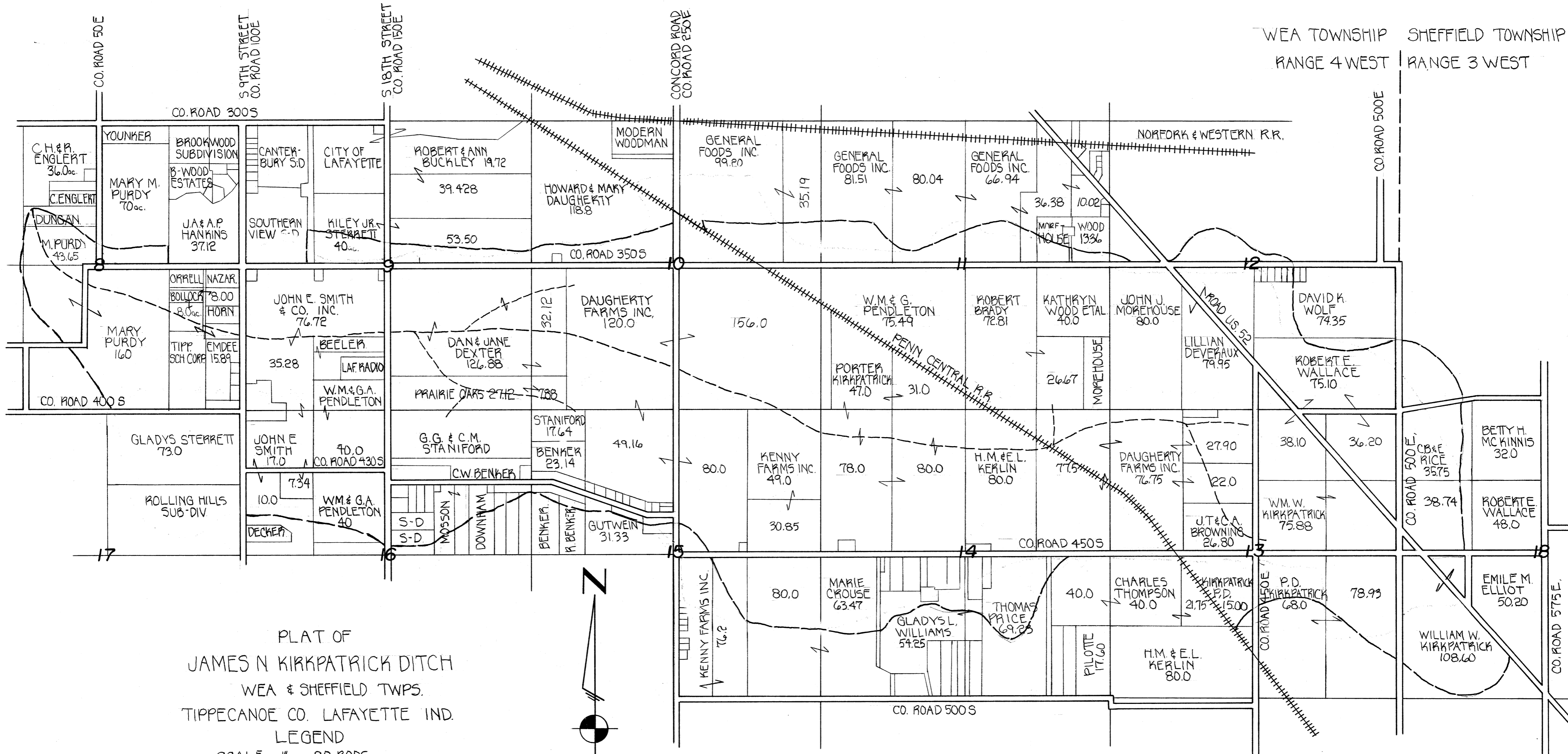


WEA TOWNSHIP SHEFFIELD TOWNSHIP  
 RANGE 4 WEST RANGE 3 WEST



PLAT OF  
 JAMES N KIRKPATRICK DITCH  
 WEA & SHEFFIELD TWPS.  
 TIPPECANOE CO. LAFAYETTE IND.

LEGEND  
 SCALE 1" = 80 RODS  
 WATER SHED AREA  
 TILE DITCH LINE  
 DRAWN BY: U. WIEDMAN 2-2-80

